



Magnesium Mineralized Water filter range

Deliciously tasting, healthy water
for an enhanced hydration experience





Better thinking creates better water

Better thinking, better water™ is not just a strapline, it's how we approach everything we do. Behind our extensive range of drinking water solutions comes knowledge, experience, research and dedication, all of which allows us to offer you highly-certified products focused on delivering purified, great-tasting, healthy water in the safest and most sustainable way.

Premium Magnesium Mineralized Water for an enhanced hydration experience

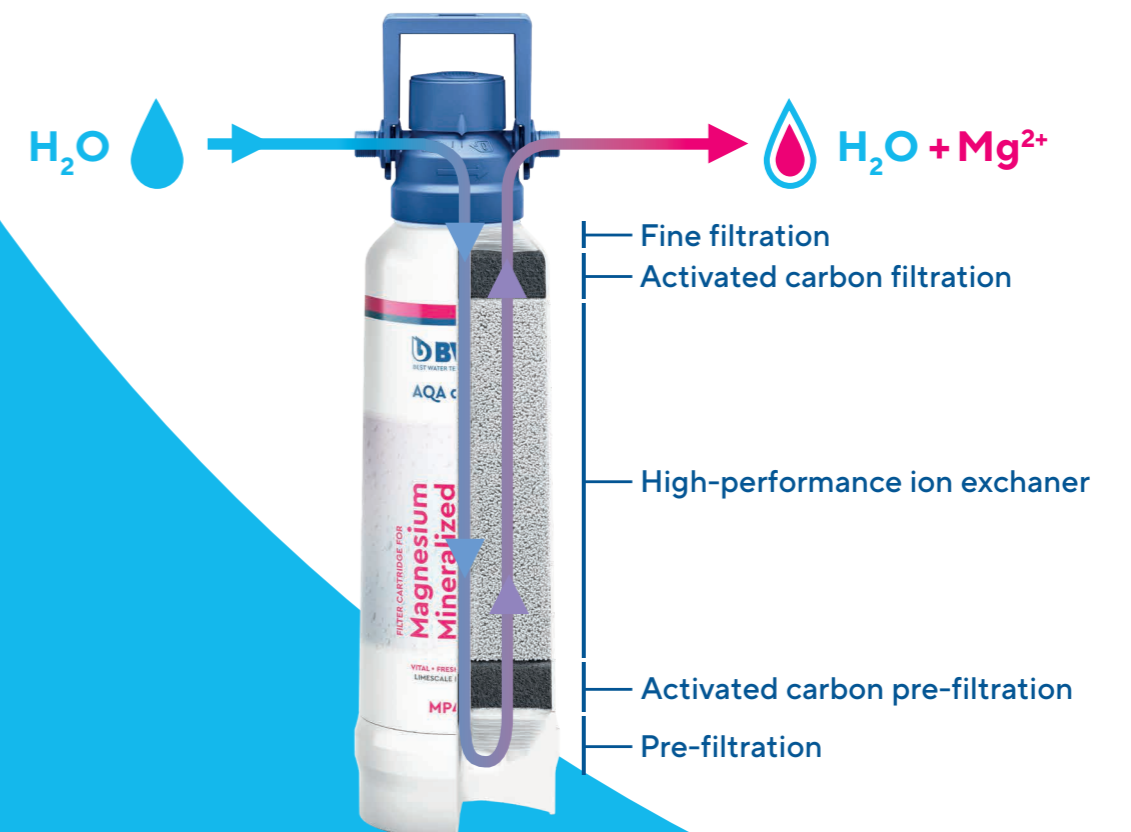
We know healthy hydration is key for your staff productivity and well-being; water has the power to refresh and revitalise, but what if it can do more?

We have partnered with BWT, Europe's No. 1 in water filtration technology, to provide a range of magnesium mineralized filters, that are able to deliver an enhanced hydration experience.

Our Waterlogic range of magnesium mineralized filters, powered by BWT's unique Magnesium Technology, enhances your water for a genuine taste experience.

The advanced filtration process reduces heavy metals and taste-impairing substances, and enriches the water with precious magnesium, to maintain balanced mineral content at an almost neutral pH value*. Magnesium Mineralized Water is ideal to give a little extra boost to the daily magnesium intake, contributing to the overall wellness of your employees.

*The patented ion exchanger exchanges calcium for magnesium and hydrogen ions. Magnesium carbonate is many times more soluble than calcium carbonate, and at the same time the pH value is reduced to a value of approx. 6.5. It also reduces heavy metals such as lead and copper.



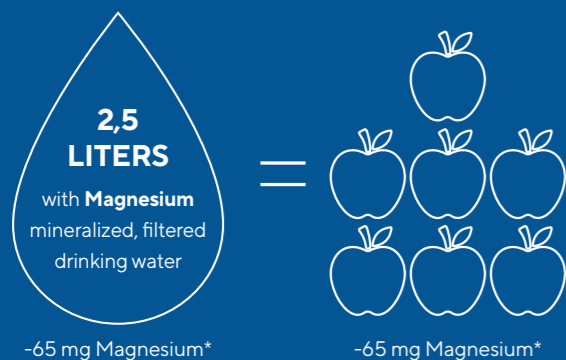
Refine your hydration experience at work with Magnesium Mineralized Water

Whether in the office, showroom, shop or wellness facilities, regular hydration is vital and encourages your staff to perform better and your customers to stay longer. The important mineral magnesium helps to contribute to provide the energy needed for a hard day's work.

When used with Waterlogic freestanding and countertop dispensers, the Waterlogic Magnesium enriched filter range provides premium water mineralization, particularly well suited for use in healthcare, schools and universities, wellness facilities and any workplace where high levels of performance and employees' wellbeing are at the core of the business.

Waterlogic's Magnesium enhanced water, powered by BWT's Magnesium Technology, not only reduces the level of calcium and particles in the water, but also reduces heavy metals and unwanted substances that affect its taste, smell and goodness, while enriching the water with the addition of the precious mineral magnesium.

THE CLEVER WAY TO SUPPORT YOUR EMPLOYEES, DAILY MAGNESIUM REQUIREMENT



**at an average water hardness of 304 ppm.



Key advantages:



Access to premium, unique-tasting water directly from your favourite Waterlogic dispenser at a simple touch of a button.



Reduces heavy metals, such as lead and copper, and addresses odour and taste disturbing substances like chlorine.



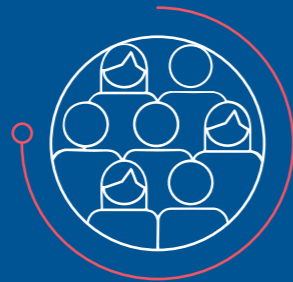
Perfect to prepare barista-quality hot and cold drinks in your workplace: the presence of magnesium allows tea and coffee to develop a fuller aroma and rounder taste.



Revitalises, refreshes and rehydrates: helping to boost staff and clients' physical and mental performance.

The benefits of magnesium

THE VITAL MINERAL



300 MG

magnesium every day

The human body requires about 300 mg magnesium every day and even significantly more when leading an active lifestyle.

Source: German society for Nutrition

75%

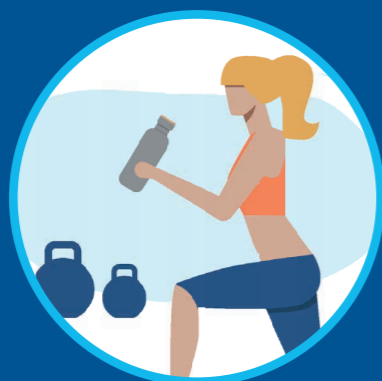
of the population have a magnesium deficiency*

*Source: United States Department of Agriculture Agricultural Research Service

CONTRIBUTION TO A HEALTHY LIFESTYLE

Magnesium is an important macromineral, playing an essential role in over 300 enzyme reactions in the human body.

This vital mineral stimulates the cardiovascular system and mental capacity and is important for our muscle condition. Magnesium also boosts the immune system and plays a central part in our nervous system, helping to alleviate stress; improving sleep quality; boosting energy levels and general mood too.



CAN HELP IMPROVING CONCENTRATION AND PERFORMANCE

A sufficient supply of magnesium helps against tiredness and exhaustion. It supports the maintenance of the physical functions, such as the ability to concentrate. Some studies suggest that it can boost exercise performance as magnesium helps move blood sugar into your muscles and dispose of lactate, which can build up during exercise and cause fatigue.



UNIQUE, SOFT TASTE AND FULL AROMA

Enhancing the water with magnesium heightens the taste of purified water. Nowhere is this more evident than when you drink tea or coffee made with Magnesium Mineralized Water. By adding magnesium, the mineral balance of the water is maintained.

This results in an almost neutral pH-value*, which connoisseurs of high quality, still mineral water experience as especially soft and palatable. Regular filtered water is transformed into tasty drinking water, making it ideal when preparing a hot beverage as it brings out the full flavour of coffee and tea.



*The patented ion exchanger exchanges calcium for magnesium and hydrogen ions. Magnesium carbonate is many times more soluble than calcium carbonate, and at the same time the pH value is reduced to a value of approx. 6.5. It also reduces heavy metals such as lead and copper.



Magnesium Mineralized Water

For the perfect taste

The Waterlogic Magnesium Mineralized Water is created in synergy with BWT's patented Magnesium Filtration Technology by refining drinking water through five filtration stages, then purifying it via the thorough action of UVC Firewall(R) technology. This unique technology effectively reduces substances such as chlorine, which can affect the smell and taste, and heavy metals, such as copper, lead and nickel. The filtered water is then enriched with the valuable mineral magnesium to maintain a balanced mineral content with a virtually neutral pH value* for an enhanced taste.

Multiple water filtration

M300 and M400 filters turn your regular drinking water into magnesium enhanced water.

- 1 Primary filtration filters particles, e.g. sand or dust.
- 2 Activated-carbon preliminary filter for protecting the ion exchanger.
- 3 Powerful ion exchanger provides the essential mineral magnesium. Reducing the amount of heavy metals such as copper, lead and nickel.
- 4 Activated-carbon filtration reduces substances impairing taste and smell, such as chlorine.
- 5 Fine filtration collects even the finest particles.



*The patented ion exchanger exchanges calcium for magnesium and hydrogen ions. Magnesium carbonate is many times more soluble than calcium carbonate, and at the same time the pH value is reduced to a value of approx. 6.5. It also reduces heavy metals such as lead and copper.



Magnesium Mineralized Water PROTECT

For the perfect taste and reliable limescale protection

The Waterlogic Magnesium Mineralized filter range also includes a dedicated solution to cater for hard water installations: the BWT's Mineralized Water Protect filter not only boasts the same advantages as the M300 and M400 filters, but also provides the added benefit of scale reduction. The filter reliably removes the elements that cause limescale to achieve the best all-round sensory experience in both hot and cold drinks.



Magnesium Mineralized Water cartridges for a superior taste experience

Quick product comparison



OVERVIEW DATA	Magnesium Mineralized Water		Magnesium Mineralized Water PROTECT	
	M300	M400	MP300	MP400
Magnesium Mineralized Water ⁽¹⁾	✓		✓	
Chlorine reduction	✓		✓	
Limescale protection	-		✓	
Filter capacities* (in liter)				
Capacity in l	3,330	5,000	1,400	2,100
	@ 215 ppm		@ 215 ppm	
Capacity at	Cold use		Hot and cold use	
Soft	< 143 ppm	4,960	7,440	2,160
Medium	143 - 251 ppm	2,860	4,280	1,120
Hard	268 - 376 ppm	1,900	2,860	670
Very hard	394 - 501 ppm	1,430	2,150	370
Very, very hard	> 501 ppm	1,150	1,710	320

TECHNICAL DATA					
Operating conditions					
Working pressure range	bar	2-8	2-8	2-8	2-8
Intake water pressure	bar	>1.2	>1.2	>1.2	>1.2
Water temperature (min -max)	°C	+4 to +30	+4 to +30	+4 to +30	+4 to +30
Ambient temperature (min -max)	°C	+4 to +40	+4 to +40	+4 to +40	+4 to +40
Ambient temperature during storage/transportation (min -max)	°C	-20 to +40	-20 to +40	-20 to +40	-20 to +40
Nominal flow	l/h	180	180	180	180
Operating position	horizontal/vertical				
Dimensions and weight					
Total height without wall mounting bracket	mm	420	475	420	475
Total height with wall mounting bracket	mm	445	500	445	500
Height to center of connection	mm	366	421	366	421
Ø filter cartridge	mm	110	130	110	130
Appr. filter cartridge weight (dry wet)	kg	2.1 3.2	2.4 4.2	2.1 3.2	2.4 4.2

* The indicated filter capacity is valid for standardised lab conditions. In operation the capacity can vary due to different parameters. Replace the filter cartridge when capacity is exhausted the flow rate noticeably decreases and at least every 12 months.
⁽¹⁾ Recommended for water hardness from <89 ppm

Better thinking, better water, better for you, better for the planet™

At Waterlogic, everything starts with the way we think about water. Behind every drop of Waterlogic water are years of knowledge, innovation and experience to deliver purified, great-tasting water in the safest and most sustainable way.

And because we design, manufacture, distribute, install and service our own water dispensers, you can enjoy unparalleled product quality including a range of consumables and accessories, and highly responsive Total Care service that is second-to-none.

Contact us today to learn more about Waterlogic and find out which solution is right for you.

Upgrade your hydration experience

Call 0333 323 2732

Email consumables@waterlogic.co.uk

Visit www.waterlogic.co.uk



Waterlogic GB Limited
Shaw Road
Wolverhampton
WV10 9LE